

# Neurodevelopmental Assessment



# What will happen?

We want to get to know all about you – what you're good at and what you find difficult.



Our team will spend time with you, with your parent/carer and with other people that know you well i.e. school.

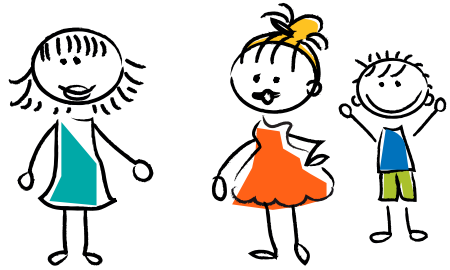


At the end you, your parent/carer and school will get a report with things you're good at and things you need help with. This will mean you can get some help with things you find difficult.

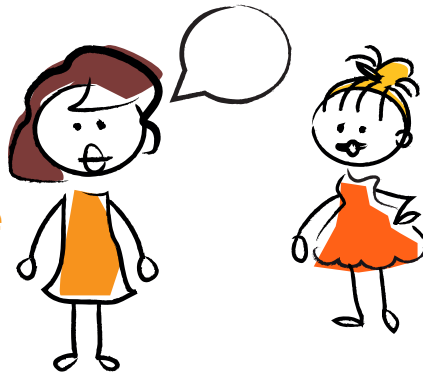


# How it will happen?

You and your parent/  
carer will meet someone  
at Kimberworth Place to  
have a chat.



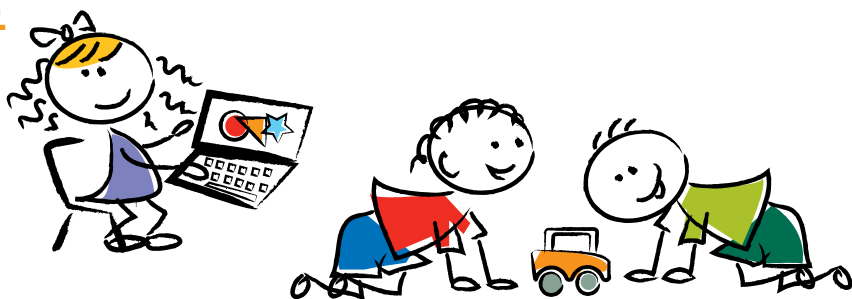
Your parent/carer will c  
ome to Kimberworth Place  
to have a chat about  
when you were little.



We will come to school  
and meet with your  
teachers to learn  
about you.



You will come to Kimberworth Place and you might play some games with someone or you might play on a computer.



Our team will meet and talk about everything that you have done with us.



You will come back to Kimberworth Place and we will talk to you and your parent/carer about what we have found.

